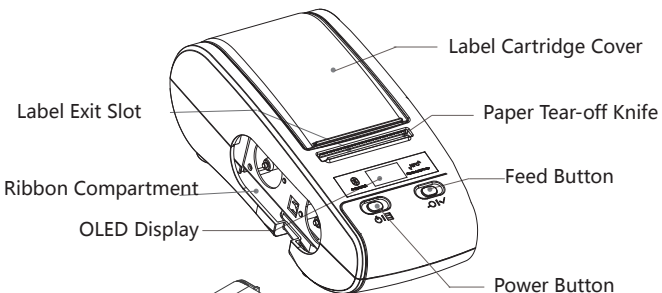
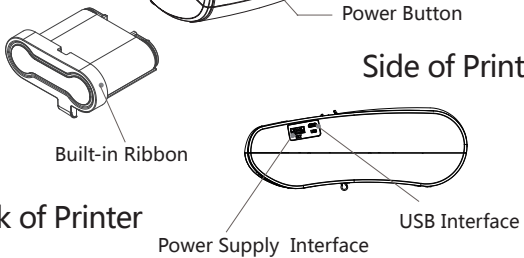


Printer Parts

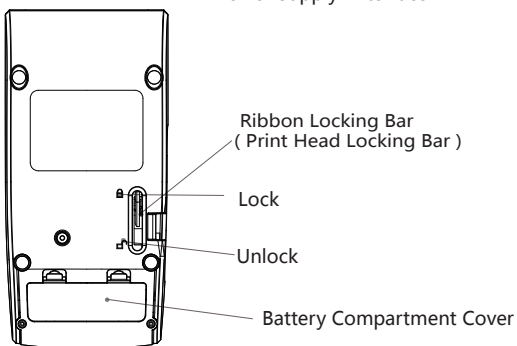
Front of Printer



Side of Printer



Back of Printer



Basic Operation

1. Ribbon Installation

Take out Ribbon: Pull ribbon locking bar to unlock, take the ribbon out.
Install Ribbon: Pull ribbon locking bar to unlock, insert ribbon to the bottom of ribbon compartment, hold it by hand and pull ribbon locking bar to lock.

2. Power On the Printer

Press power button for 1.5s to turn the printer on.

3. Label Roll Installation

Label size: Label printing side outward, diameter of label roll is less than 65mm (must not more than 67mm), label width 12~54mm, maximum width 54mm (including base paper).
Install paper: Put label roll into the cartridge. Please make sure the label printing side face down, move label adjusting plate to appropriate position according to label's width, insert front end of label into label guiding slot , press feed bottom simultaneously to locate position.

4. Feed Label


Label paper: short press feed button to feed one label to the beginning of next label; long press feed button to feed label continuously, release the feed button to stop at the beginning of next label.

Continuous paper: press feed button to start feeding label, release feed button to stop feeding.

5. Auto Shutdown

Printer will shut down automatically if no use it for a long period. Time of automatic shutdown can be set by setting button, the default time is 15 minutes.

6. Set Up Printer

Short press power button, printer enters setting status when the icon  appears on the top left corner of display, then press feed button to make corresponding options.

7. Secondary Function

Printer can provide 5V (500mA) power for external devices via power supply interface, like phone, Pad, etc.

Connect with Printer

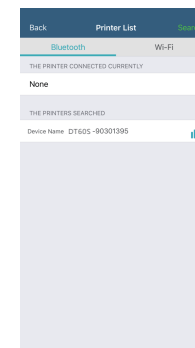
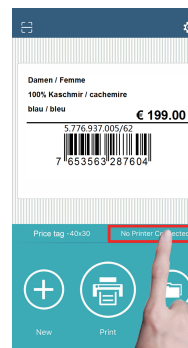
1. Install Editing Application

Scan QR Code on the right side, download label editing App WeiDa Label (Android, iOS)



2. Connect with Printer via Bluetooth

Turn on printer-turn on mobile phone Bluetooth-open label editing App, click "No Printer Connected". Then you can edit your label and print it.
If the printer hasn't paired before, click search button, then the unpaired printer will be listed. Select unpaired printer, WeiDa will pair with it automatically, enter password and connect with printer.



3. Use Cloud Catalogue

Please consult your supplier for account password of cloud catalogue. Log in your account to choose template you need from cloud catalogue, click it to use, modify then save the template. In this case, you can choose and print it directly from the cloud catalogue next time.

Specifications

Display Type	OLED display
Print Method	Thermal transfer line
Print Color	Black and white
Resolution	203 DPI/300 DPI (optional)
Dot per Line	384 dots/line
Print Speed	15 ~ 50 mm/s
Battery Runtime	150 ~ 180 m (12.5% print darkness)
Standby Time	About 5 years (power off)
Battery Capacity	2600 mAh
Charge Mode	5V USB
Charge Time	6 ~ 7 h
Power Bank Function	Support
Paper Type	Self-adhesive paper
Paper Form	Roll paper
Paper Size	54(W) × dia.65 mm
Print Width	48 mm
Paper Thickness	0.05 ~ 0.15 mm
Dimension	205 (L) × 106 (W) × 78 (H)mm
Weight	725 g
Standard Accessories	Power adapter, battery, ribbon, USB cable
IP Standard	IP54
Operating Temperature	0 C ~ 45 C
Interface	Micro USB, Bluetooth (Android, iOS), 2.4G WiFi (optional)
Command Set	LPAPI [®] , CPCL, ESC/POS compatible with instruction sets
Location Mode	Reflection-Type, Correlation (optional)
Self-check Function	Cover open, paper out, low battery, overtemperature
Print Contents	<ul style="list-style-type: none">• Text, picture, line, graphics• 1D Barcode: CODE-39, CODE-128, EAN, UPC, other common ones• 2D Barcode: QR Code, PDF417, DataMatrix
RFID Print	UHF RFID900MHz, compatible with ISO18000-6C / EPC Gen2 (optional) HF RFID 13.56MHz, 14443-A / 15693 / NFC (optional)

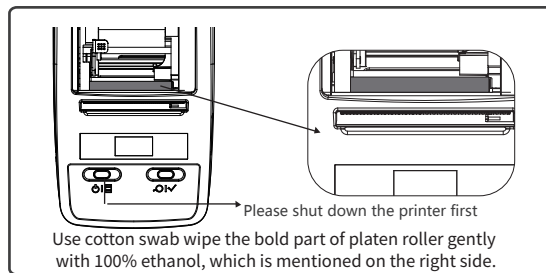
Safety Notices

Please compliance with following notices during operation

- ⚠ NOTE Do not disassemble the printer by yourself. Please read this manual carefully before use.
- ⚠ WARNING Turn off the power immediately if a malfunction occurs. When the printer or charger emits smoke or smelliness, please remove the charger and battery immediately, be aware of getting scalded.
- ⚠ WARNING Do not use the printer near petrol station, fuel depot or other inflammables.
- ⚠ NOTE The print head is still heated, do not touch it after the printing process.
- ⚠ NOTE Please choose the original label papers, or poor printing effect and printer platen roller damage can result.
- ⚠ NOTE NOTE Please recharge the printer regularly if it is not used for a long time to protect battery life.
- ⚠ NOTE Before replacing the battery, please make sure the printer turns off, or power supply is disconnected if you use a charger.

Maintenance

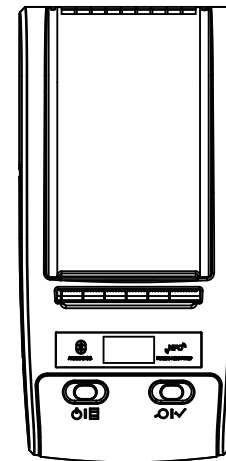
1. Cleaning for exterior and label cartridge: Wipe exterior of printer and interior of label cartridge softly, with water-dampened cloth.
2. Cleaning print head: Clean the print head regularly, especially when the printing quality declines, the cleaning method is as following:



Portable Thermal Transfer Label Printer

Portable Printer

USER'S MANUAL



Please read the manual carefully before using, and keep it for future reference