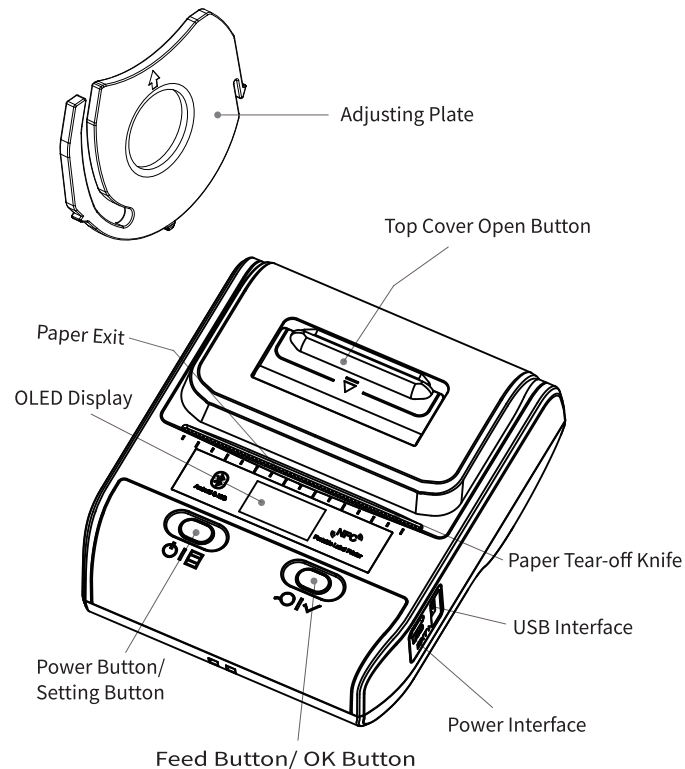


Printer Parts



Basic Operation

1. Power On

Press power button for 1.5s to turn the printer on.

2. Paper Roll Installation

Press the top cover open button and the top cover lift;

Place the paper roll into the paper bin. Please make sure the paper printing side face down, insert adjusting plates into appropriate slots according to paper's width.

(The plates are inserted on both sides of paper bin as factory default)

Pull a part of paper out then close the top cover.

3. Feed Paper

Label paper: short press feed button to feed one label to the beginning of next label; long press feed button to feed label continuously, release the feed button to stop at the beginning of next label.

Continuous paper: press feed button to start feeding label, release feed button to stop feeding

4. Power Off

The printer will shut down automatically if no use it for a long period. Time of automatic shutdown can be set by setting button, the default time is 15 minutes.

Press power button for 1.5s to shut down the printer.

5. Set Up Printer

Short press setting button, the printer enters setting status when the icon appears on the top left corner of OLED display, press OK button to make corresponding options.

6. Charge Printer

5v Output charger and power bank with USB port are the two ways to charge printer.

7.Secondary Function

The printer can provide 5v(600mA) power for external devices via USB port,like phone, pad, etc.

Connect with Printer

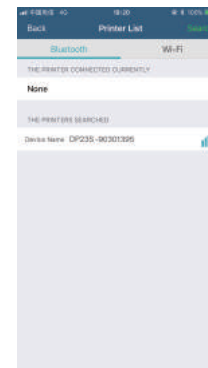
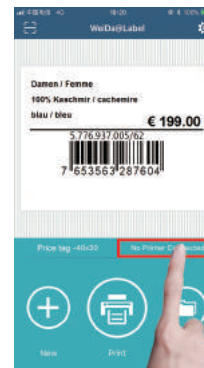
1. Install Editing Application

Scan QR Code on the right side, download label editing App WeiDa@Label (Android, iOS)



2.Connect with Printer via Bluetooth

Turn on printer-turn on mobile phone Bluetooth-open label editing App, click not connected printer. Then you can edit your label and print it. If the printer hasn't paired before, click search button, then the unpaired printer will be listed. Select unpaired printer, WeiDa will pair with it automatically, enter password and connect with printer.



3.Use Cloud Catalogue

Please consult your supplier for account password of cloud catalogue. Log in your account to choose template you need from cloud catalogue, click it to use, modify then save the template. In this case, you can choose and print it directly from the cloud catalogue next time.

Specifications

Display Type	OLED display
Print Method	Direct thermal line
Print Color	Black and white
Resolution	203 dpi
Dot per Line	576 dots/line
Print Speed	20 ~ 50mm/s
Battery Runtime	60~75m (12.5% print darkness)
Standby Time	About 3 years (power off)
Battery Capacity	1500mAh
Charge Mode	5V USB
Charge Time	4 ~ 5h
Power Bank Function	Support
Paper Type	Thermal paper/ Thermal synthetic paper
Paper Form	Roll paper
Paper Size	80(W) × dia.50 mm
Print Width	72mm
Paper thickness	0.05 ~ 0.15 mm
Dimension	125(L) × 108(W) × 62(H)mm
Weight	290g
Standard Accessories	Power adaptor, battery, paper adjusting plate, USB cable
IP standard	IP54
Operating Temperature	0 C ~ 45 C
Interface	Micro USB, Bluetooth (Android, iOS)
Command Set	LPAPI®, ESC/POS compatible with instruction sets
Location Mode	Up-down dual-reflex、up-down correlation
Self-check Function	Cover open, paper out, low battery, overtemperature
Print Contents	<ul style="list-style-type: none">• Text, picture, line, graphics• 1D Barcode: CODE39, CODE128, EAN, UPC, other commonly used barcodes• 2D Barcode: QR Code, PDF417, DataMatrix

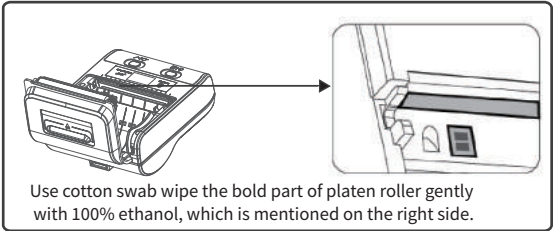
Safety Notices

Please compliance with following notices during operation

- NOTE** Do not disassemble the printer by yourself. Please read this manual carefully before use.
- WARNING** Turn off the power immediately if a malfunction occurs. When the printer or charger emits smoke or smelliness, please remove the charger and battery immediately, be aware of getting scalded.
- WARNING** Do not use the printer near petrol station, fuel depot or other inflammables.
- NOTE** The print head is still heated, do not touch it after the printing process.
- NOTE** Please choose the original label papers, or poor printing effect and printer platen roller damage can result.
- NOTE** Please take out the battery and store it separately for long term storage, or it may cause battery failure even the leakage, which may damage the printer.
- NOTE** Before replacing the battery, please make sure the printer turns off, or power supply is disconnected if you use a charger.

Maintenance

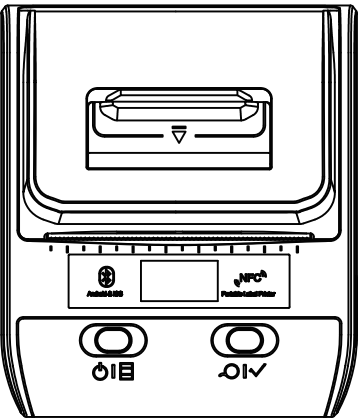
- Cleaning for exterior and paper bin: Wipe exterior of printer and interior of paper bin softly, with water-dampened cloth.
- Cleaning for platen roller: platen roller must be cleaned regularly, especially when the printing quality declines, the cleaning method is as following:



Portable Thermal Printer

Portable Printer

USER'S MANUAL



Please read the manual carefully before using, and keep it for future reference